

IXIA INDIGO PRO™

DATA SHEET

CENTRALIZED ELEMENT MANAGEMENT FOR IXIA VISIBILITY SOLUTIONS

To cope with skyrocketing traffic volume and escalating security threats, today's networks employ sophisticated, pervasive monitoring capabilities. The resulting architecture incorporates dozens – or even hundreds – of taps and bypasses, data monitoring switches, and Network Packet Brokers (NPB), all integrated into a Monitoring Access Platform (MAP) within the network infrastructure. But along with the vital advantages of this architecture comes the challenge of managing these devices for configuration, monitoring, bulk software upgrades, and more.

Now, the Ixia Indigo Pro™ Platform has been enhanced to deliver even more high-performance and efficiency features. Indigo Pro offers High Availability (HA) for robust, comprehensive management capabilities and lets you manage a wide deployment of wired, wireless, and/or virtual devices. This versatile platform also allows growing networks to expand their management and planned capabilities to keep pace with increasing needs as devices are added. Indigo Pro eases configuration and monitoring of taps, virtual taps, data monitoring switches, and network packet brokers – turning them all into fully orchestrated and coordinated monitoring resources.

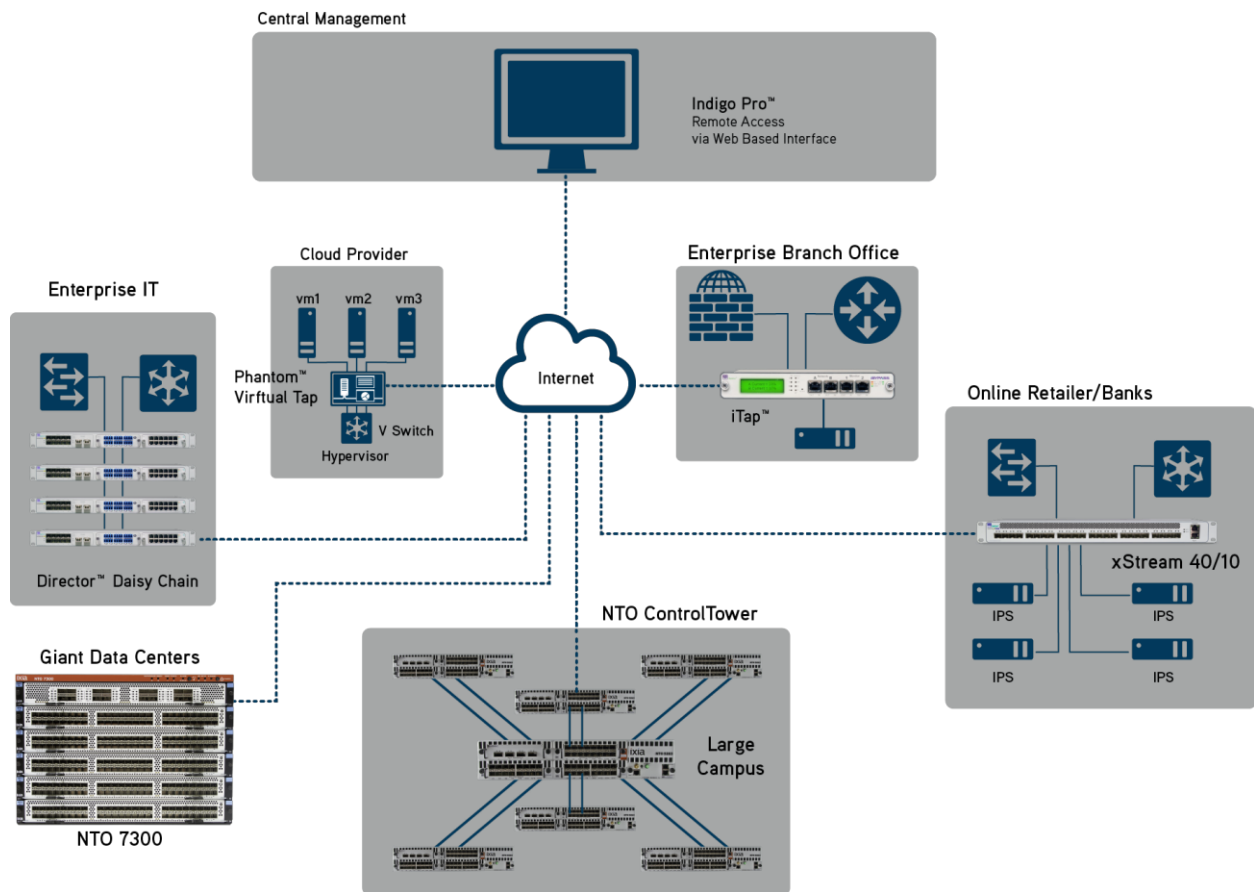


HIGHLIGHTS

- Centralized access to large numbers of managed devices via auto discovery
- Physical or virtual implementation: support for VMware and KVM
- High Availability (HA) with floating IP between master and slave units
- Master/slave can be cross-form configuration: physical-physical, virtual-physical, and physical- virtual
- Northbound Interface to support fault management with other NMS
- Device configuration and management
- Alarms and events management
- Audit trail
- Scheduler to support software upgrade, script/policy execution, and configuration import/export across many devices
- Rich graphical data visualization
- At-a-glance dashboard views
- Subnet-organized network topology map
- Snapshot and historical data views
- Trap and email forwarding
- Business logic alerts
- Print and export to CSV files
- Monitors traffic levels and quality across the network
- Expanded RADIUS and TACACS+ authentication

IXIA INDIGO PRO – PHYSICAL AND VIRTUAL APPLIANCE

Ixia Indigo Pro is delivered either as a physical appliance or as a virtual appliance in VMware or Oracle Virtual Box format. As a software solution, Indigo Pro virtual appliance is available at a significantly lower cost than the physical one. Deployment is amazingly simple too, thanks to a fast, fully automated discovery process that can quickly identify all supported Ixia NTO, Ixia iTap/iBypass/xStream family of products, and even third- party devices throughout the network. Indigo Pro also checks continuously for devices being removed, or taken offline. It also checks periodically for devices newly added. A dynamic network topology map instantly shows the “up” or “down” status of all supported devices, in addition to custom status based on active alarms (Minor, Major, Critical, SNMP error). Click on a device object/icon to drill down into detailed device status and configuration information, as well as the status of attached links.



RELIABILITY AND SECURITY FEATURES

Ixia Indigo Pro offers a spectrum of new features to expand authentication support and more. Your management and administration duties will be easier than ever, thanks to enhanced network visibility and security, plus extended virtual support. The newly enhanced High Availability (HA) feature supports master and slave units in complete sync with one floating IP address; allowing instant takeover by the Slave when the master fails. Best of all, the master and slave units can be either physical or virtual or a combination of both, enabling maximum deployment flexibility.

COMPREHENSIVE CONFIGURATION AND FAULT MANAGEMENT

Indigo Pro supports a scheduler that allows automated task execution across many devices. Common management tasks include, for example, script and policy execution, software upgrades, configuration import and export, and many more. More sophisticated configuration management allows you to associate threshold-triggered events and actions. In addition, you can create or modify, for example, filters, heartbeat, LFD, LBG, or other device-specific functions on any devices discovered by Indigo Pro.

IMPROVED DATA VISUALIZATION

Ixia Indigo Pro gathers data in real time from discovered Ixia or third-party devices, archives that data in a database for historical trend analysis, and then presents it in rich graphical formats through a web browser interface. Both IT and business users benefit from the efficiency, accuracy, and cost savings they realize by employing Indigo Pro to monitor network health and trouble spots. But it doesn't stop there: Indigo Pro is also a vital resource for growth, capacity planning, and compliance activities.

Indigo Pro's enriched capabilities include more visibility and presentation options, with an increased number of charts or dashboards per user – and users can now define their own views of interest. Indigo Pro will even remember and create a user-specific “home page” upon login to save time and offer up relevant data faster.

Traffic statistics displayed include bandwidth utilization, byte and packet counts, errors, and jumbo frames, all viewable on a device-by-device basis. In addition, a dashboard can be configured to confederate the data from multiple links and devices for an at-a-glance overview of network traffic activity.

SECURITY AND USER MANAGEMENT

The Indigo Pro platform delivers a total solution to all NMS security-related issues. All user actions are inspected and audited against a permissions profile and logged to an audit trail. The system's security is structured in three layers:

- External authentication via RADIUS and TACACS
- Authenticated and encrypted sessions between the client web browsers and the server throughout a user's entire sessions
- User authentication by a login session based on a user name and password
- Role-based access control and device locking to ensure that a given user can perform certain actions on specific devices with read or write permissions. These are based on a global policy that meets the organization's compliance standards

SPECIFICATIONS

SPECIFICATIONS	
Functional	<ul style="list-style-type: none"> • Fast, automatic device discovery • Device configuration and fault management • High Availability with master and slave redundancy in physical, virtual, or combined • Data visualization: snapshot and historical, utilization, total bytes, total packets, jumbo packets, CRC errors, dashboard views • Dashboard of graphs • Security: profile-based permissions and views, comprehensive audit trail, and role-based access control • Network topology map, organized by subnet • Data export (print, export to CSV file) • Device management (device dependent): port settings, device system settings, device user accounts • Device-dependent event logging and fault management • Scheduler for bulk software upgrade, script and policy execution, and configuration import/export
Virtual Appliance (Optional)	<ul style="list-style-type: none"> • VMware vSphere 5.x and 6.0 support • CentOS 7 (64-bit) Virtual appliance: <ul style="list-style-type: none"> • 2GB RAM • 20GB HDD • 4 CPU Physical appliance: <ul style="list-style-type: none"> • 16GB RAM • 120GB HDD • 2 CPU (Intel(R) Xeon(R) CPU E5-2620-0 at 2.00GHz)
Operating	<ul style="list-style-type: none"> • Operating Temperature: 10°C to 35°C • Storage Temperature: -10°C to 70°C • Relative Humidity: 10% min, 90% max, non-condensing
Mechanical	<ul style="list-style-type: none"> • Dimensions: 1.75" high x 23.5" deep x 19" wide • Mounting: 19" rack mount (1U) • Weight: 26 lbs (11.8kg)

SPECIFICATIONS	
Electrical Specifications	<ul style="list-style-type: none"> • Power: 100-240 VAC, 47-63Hz 650W PFC • Redundancy: Dual modules • Maintenance: Power supplies are hot-swappable Indicators • Power, disk activity, network 1 activity, network 2 activity, over temperature warning
Certifications	<ul style="list-style-type: none"> • FCC, CE, VCCI, and C-Tick certified • Fully RoHS and WEEE compliant
Supported Web Browsers	<ul style="list-style-type: none"> • Internet Explorer, Firefox, Safari, Chrome • Note: Java support must be enabled in the browser
Supported Devices	<ul style="list-style-type: none"> • Ixia Net Tool Optimizer (NTO) • Ixia NTO ControlTower • Ixia GTP Session Controller • Ixia TradeView • Ixia xStream 40 and xStream 10 • Ixia Director, Ixia Director Pro • Ixia xBalancer • Ixia Net Optics iTap and iTap2 • Ixia Net Optics iBypass 1/10G • Ixia Net Optics iBypass 3 • Ixia Net Optics iBypass HD • Ixia Net Optics iBypass VHD • Ixia Net Optics iBypass 40-10 • Ixia Vision One

ORDERING INFORMATION

IP-2050-M

Ixia Indigo Pro Manager license, 50 nodes

IP-2100-M

Ixia Indigo Pro Manager license, 100 nodes

IP-2250-M

Ixia Indigo Pro Manager license, 250 nodes

IP-2102M

Ixia Indigo Pro Manager, 1,000 nodes

LIC-VA025-M

Ixia Indigo Pro Manager Virtual, 25 nodes

LIC-VA050-M

Ixia Indigo Pro Manager Virtual, 50 nodes

LIC-VA0100-M

Ixia Indigo Pro Manager Virtual, 100 nodes

LIC-VA0250-M

Ixia Indigo Pro Manager Virtual, 250 nodes

IP-VA0500M

Ixia Indigo Pro Manager Virtual, 500 nodes

IXIA WORLDWIDE

26601 W. AGOURA ROAD
CALABASAS, CA 91302

(TOLL FREE NORTH AMERICA)

1.877.367.4942

(OUTSIDE NORTH AMERICA)

+1.818.871.1800

(FAX) 818.871.1805

www.ixiacom.com

© Keysight Technologies, 2017

IXIA EUROPE

CLARION HOUSE, NORREYS DRIVE
MAIDENHEAD SL6 4FL
UNITED KINGDOM

SALES +44.1628.408750

(FAX) +44.1628.639916

IXIA ASIA PACIFIC

101 THOMSON ROAD,
#29-04/05 UNITED SQUARE,
SINGAPORE 307591

SALES +65.6332.0125

(FAX) +65.6332.0127